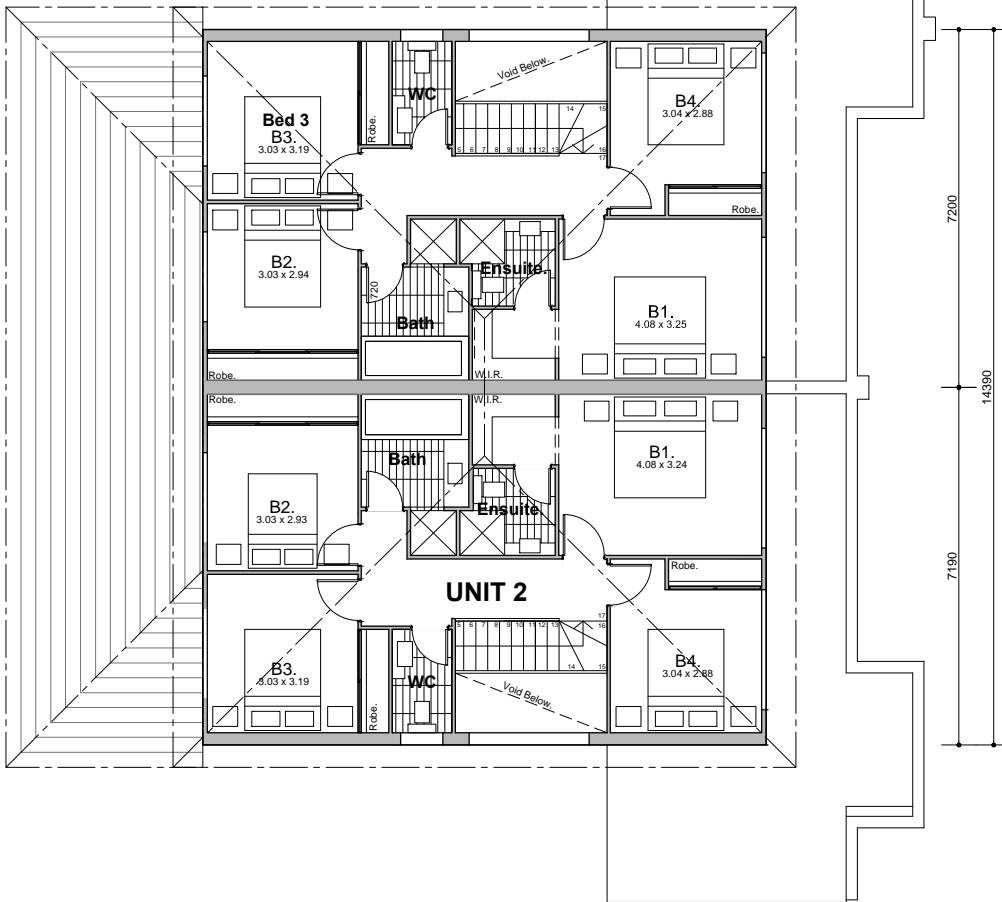
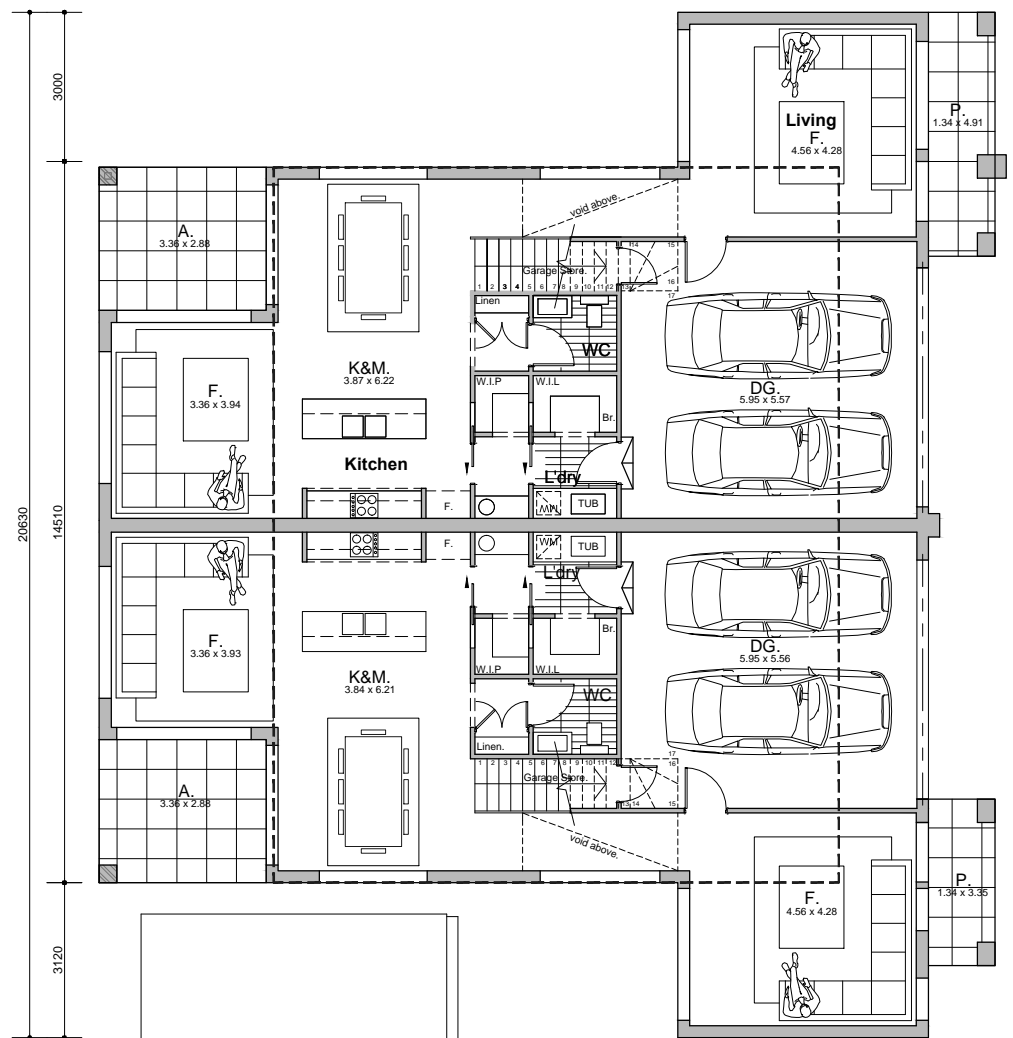


Avalon 48



AREA

Living Area (GF)	181.60 sqm
Living area (FF)	163.04 sqm
Garage	70.50 sqm
Alfresco	19.34 sqm
Front Porch	11.06 sqm
Total	445.59 sqm
	47.95 sq



WILLOUGHBY HOMES

building the future

P: 1300 031 268

Avalon 48



 8  7  4  47.95



WILLOUGHBY HOMES

building the future

P: 1300 031 268

Avalon 48



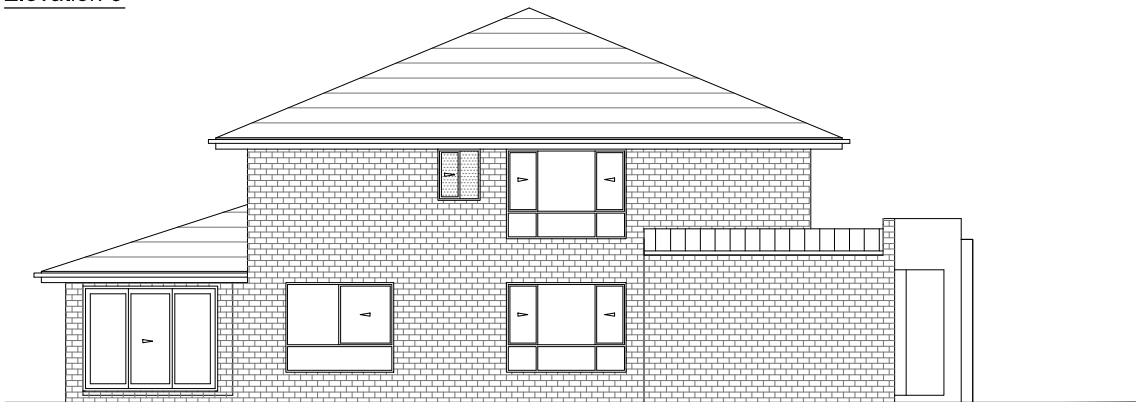
Elevation 1



Elevation 2



Elevation 3



Elevation 4

